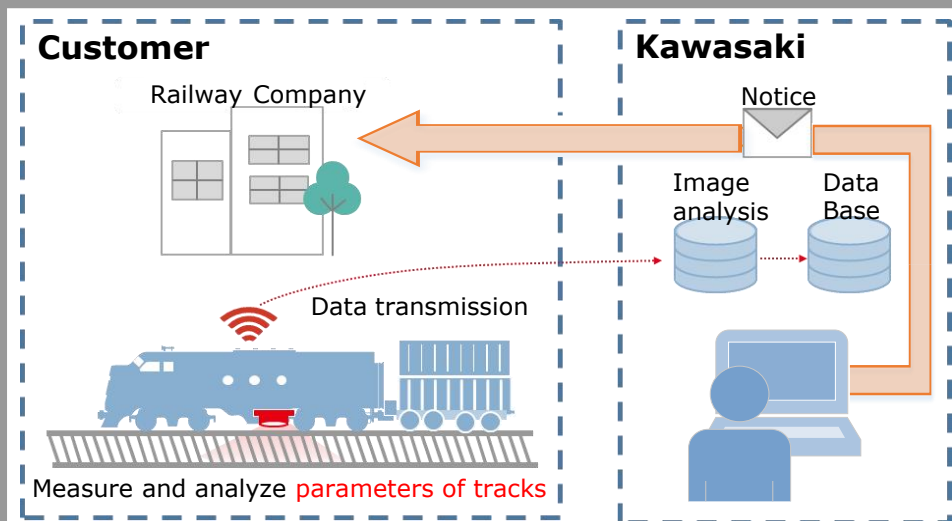


KAWASAKI LOCOMOTIVE MOUNTED AUTONOMOUS TRACK GEOMETRY MEASUREMENT SYSTEM



Kawasaki is excited to introduce the newest product for the North America rail industry. The Locomotive Mounted Autonomous Track Geometry Measurement System (LATGMS) can be mounted securely on a locomotive/passenger car and provides critical data, more frequently, faster, more precise and automatically.

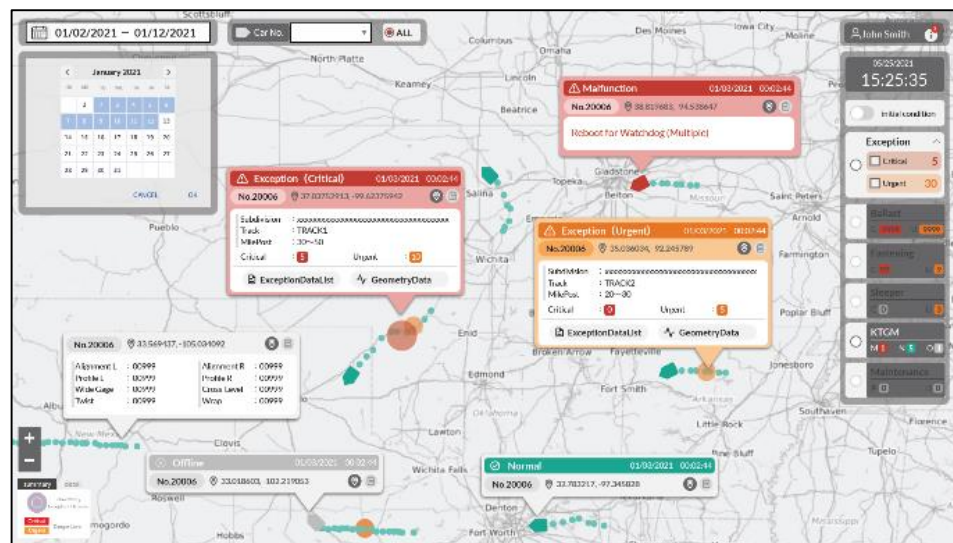


LATGMS continuously measures and analyzes parameters of tracks - including gauge, profile, alignment, cross level and twist - during normal service operations. In the event that the LATGMS detects irregularity of tracks, a notification is timely sent. Collecting data during normal service operations may decrease the frequency of inspections by dedicated track inspection cars and visual inspections by inspector.



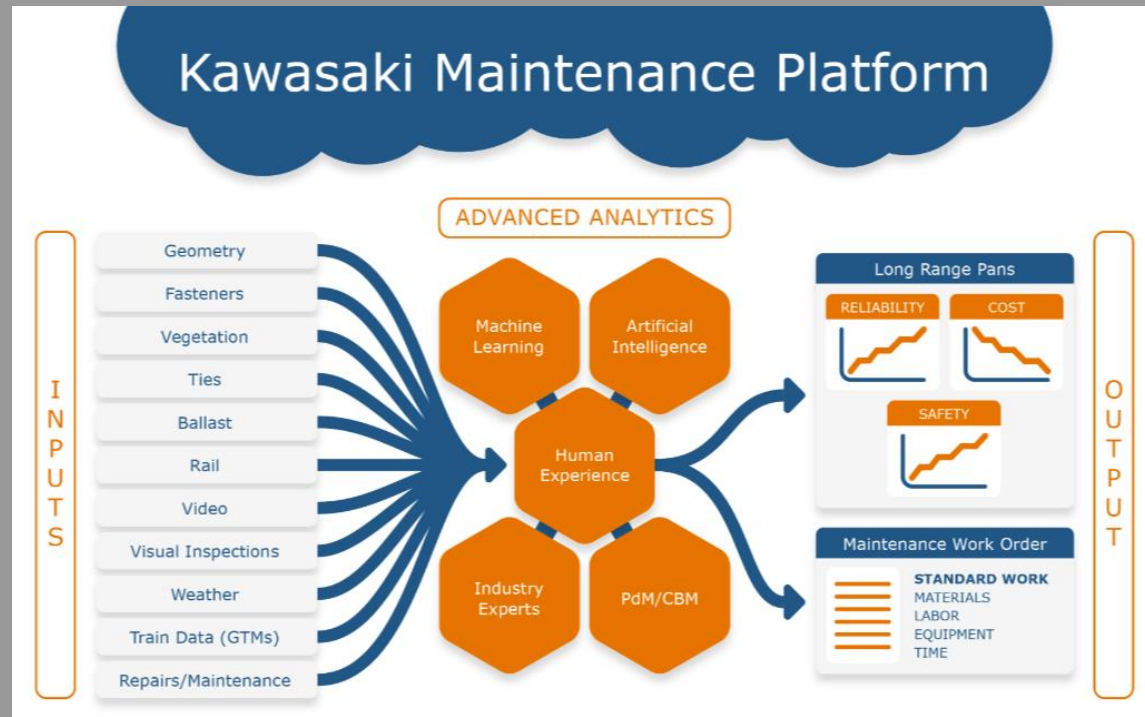
Features of the KAWASAKI LATGMS

- Increase frequency of inspections while shipping goods
- Future predictability by trend analysis
- Retrofittable on locomotives/passenger cars with a few components
- Proven and reliable in US rail condition



Future Technologies

Our vision is to deliver a platform for the rail industry that provides all track monitoring data, provides software solutions to analyze and predict maintenance needs, and offer services to execute the work.



Specification Sheet of LATGMS

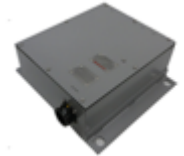
DAQ Unit



Camera Unit



Communication Unit



| | DAQ Unit | Camera Unit | Communication Unit |
|-------------------------------|-------------------------------|----------------------|----------------------|
| Dimensions | 14.4" x 15" x 4.8" | 11.9" x 14.8" x 8.5" | 12.3" x 11.4" x 4.2" |
| Weight | 27 lbs | 20 lbs | 14 lbs |
| Dust and Water Proof | IP 54 | IP 66 | IP 54 |
| Quantity / Locomotive | 1 | 2 | 1 |
| Laser Class | - | IIIa | - |
| General Requirement | IEC 60571 | | |
| Operating Temperature | -40 °F to 122 °F | | |
| Relative Humidity | Up to 95% no condensation | | |
| Shock and Vibration | IEC 61373 category 1, class B | | |
| Electromagnetic Compatibility | IEC 62236-3-2 | | |
| Operating Speed | UP to 75mph | | |
| Sampling Interval | 1 feet | | |
| Operating Voltage | 74VDC (to DAQ) | | |